

# Flexible Cargo Solutions for A320 Family Aircraft

## Flexible Cargo Configuration Solutions for A320 Family Aircraft

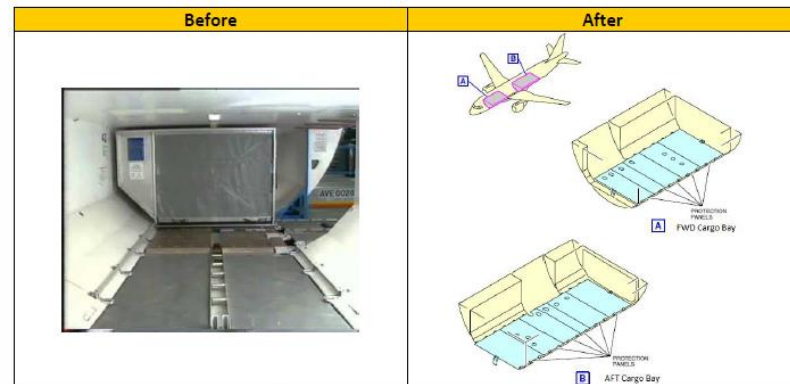
1. Cover Solution for Cargo Loading System

2. Cargo Bay Panel Upgrade Solution



### Install Cover Panels over the existing Cargo Loading System (CLS) on A320 Family Aircraft to allow Bulk Loading of Passenger Baggage and Cargo.

- ✓ Light weight
- ✓ Cost effective
- ✓ Fully reversible
- ✓ Modular options (AFT / FWD)
- ✓ Easily installed and removed with no permanent change to the aircraft or CLS
- ✓ Replacement panels as required



#### EASA / FAA Approved Engineering Package & Installation Kit with EASA Form 1

- EASA / FAA Approved Data Package
- Installation drawings
- Service Bulletin
- Manual Supplements (IPC, AMM, W&B)
- Eirtech Cover Panel Installation Kit for CLS.
- All required attach fittings
- All mandatory placards

#### Technical Specifications

- **Applicable Aircraft:** A319, A320, A321.
- **Weight:** Lightest equivalent solution on the market.
- **Installation Time:** 16 man hours.
- **Certification:** EASA / FAA.
- **Lead Time:** Short lead times for engineering and kits.

### Install Reinforced Cargo Sidewall, Ceiling and Floor Panels on A320 Family Aircraft

- ✓ Same weight as OEM solution
- ✓ Cost effective
- ✓ OEM Approved Materials
- ✓ Modular options (AFT / FWD)
- ✓ Easily installed
- ✓ Replacement panels available as required
- ✓ Refresh Cargo Bay with new panels

#### EASA / FAA Approved Engineering Package & Installation Kit with EASA Form 1

- EASA / FAA Approved Data Package
- Installation drawings
- Service Bulletin
- Manual Supplements (IPC, AMM, W&B)
- Eirtech Cargo Bay Panel Upgrade Kit
- All required attach fittings
- All mandatory placards

#### Technical Specifications

- **Applicable Aircraft:** A318, A319, A320, A321.
- **Weight:** Same weight as OEM solution.
- **Installation Time:** 32 man hours.
- **Certification:** EASA / FAA.
- **Lead Time:** Short lead times for engineering and kits.

Eirtech Aviation is a world leading specialist aviation services company.

We work with International Airlines, Private Operators and Aviation Leasing Companies globally.

- EASA Design Organisation EASA 21J.452
- GCAA Approved Design Organisation DOA/126
- EASA Production Organisation IE.21G.0002
- EASA CAMO Part M (G&I) IE.MG.113

## Engineering Services



Design



Parts  
Manufacturing



Materials

## Asset Management



CAMO



Technical  
Services

## Composites



Composite  
Repair



Composite  
Manufacturing



**Trusted by the World's Leading Airlines & Aircraft Leasing Companies to Deliver.**

**Anytime. Anywhere.**



+353 61 417 800



eassales@etas.ie



@EirtechAviation



[www.eirtechaviation.ie](http://www.eirtechaviation.ie)

